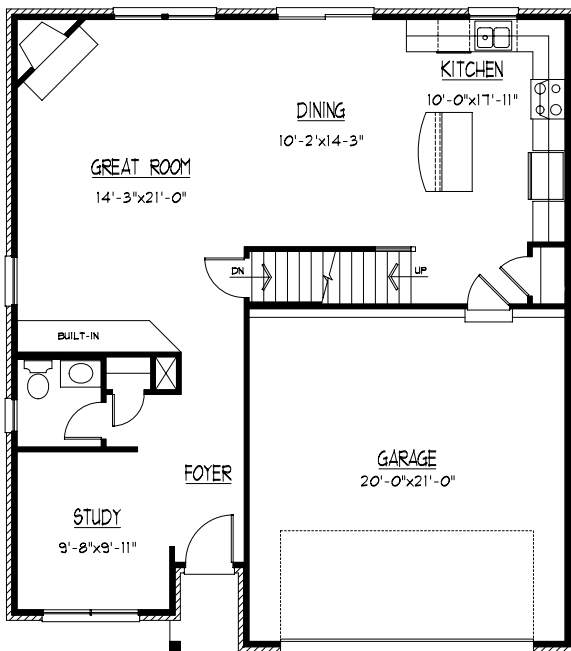
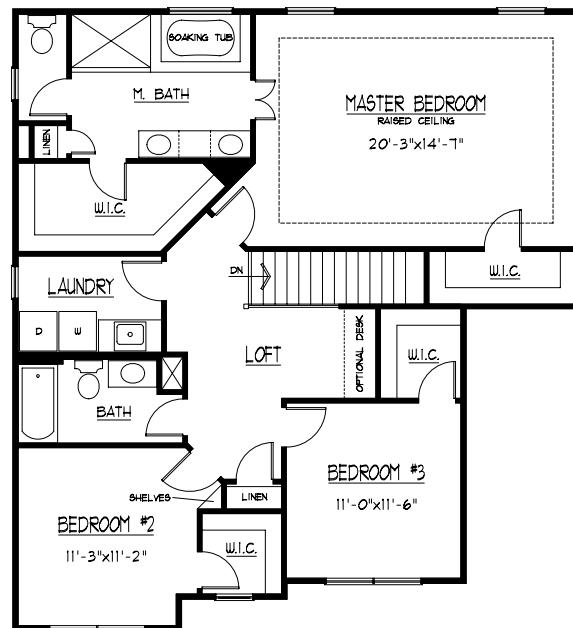




The Maderia



FIRST FLOOR PLAN



SECOND FLOOR PLAN

Total Living Area
2300 sq. ft.



THIS BROCHURE IS FOR ILLUSTRATIVE USE ONLY. ALL FLOOR PLANS, EXTERIOR RENDERINGS AND DIMENSIONS ARE APPROXIMATE. NOT DRAWN TO SCALE AND ARE SUBJECT TO CHANGE. FLOOR PLANS, EXTERIOR AND STANDARD FEATURE MAY VARY PER COMMUNITY AND PER ELEVATION AND OPTIONS SELECTED. ALL SQUARE FOOTAGES FIGURED ON OUTSIDE DIMENSIONS. OPEN FOYERS INCLUDED. PLEASE SEE YOUR SALES PROFESSIONAL FOR SPECIFIC DETAILS. GREYSTONE COUNTRY HOMES RESERVES THE RIGHT TO MODIFY ALL PLANS AND SPECIFICATIONS WITHOUT NOTICE OR OBLIGATION.