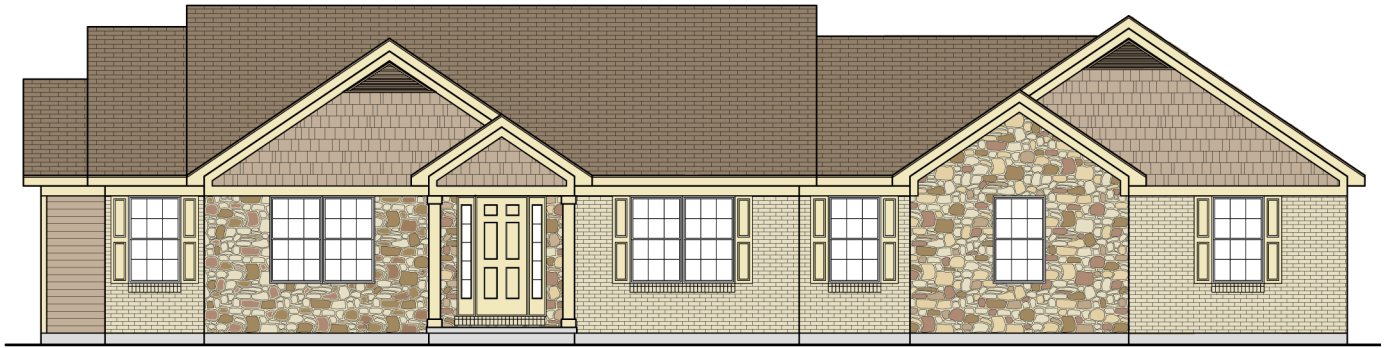


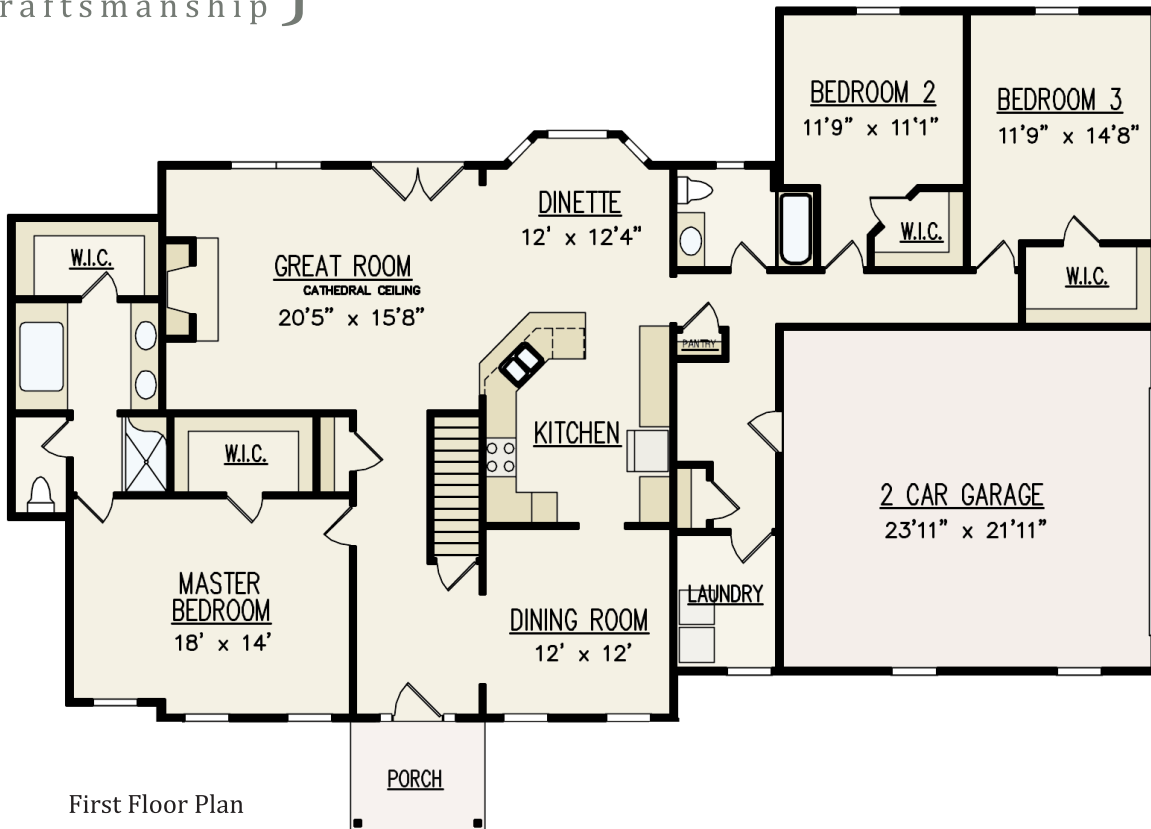
CLASSIC  
series

the **WILSPRING** Ranch



Elevation B

Superior  
craftsmanship }



First Floor Plan

1st Floor: 2,222 sq. ft. | Total Living Area: 2,222 sq. ft.

**Greystone**  
building quality homes for your lifestyle

[www.greystonecountryhomes.com](http://www.greystonecountryhomes.com)

THIS BROCHURE IS FOR ILLUSTRATIVE USE ONLY. ALL FLOOR PLANS, EXTERIOR RENDERINGS AND DIMENSIONS ARE APPROXIMATE, NOT DRAWN TO SCALE AND ARE SUBJECT TO CHANGE. FLOOR PLANS, EXTERIOR AND STANDARD FEATURE MAY VARY PER COMMUNITY AND PER ELEVATION AND OPTIONS SELECTED. ALL SQUARE FOOTAGES FIGURED ON OUTSIDE DIMENSIONS, OPEN FOYERS INCLUDED. PLEASE SEE YOUR SALES PROFESSIONAL FOR SPECIFIC DETAILS. GREYSTONE COUNTRY HOMES RESERVES THE RIGHT TO MODIFY ALL PLANS AND SPECIFICATIONS WITHOUT NOTICE OR OBLIGATION.



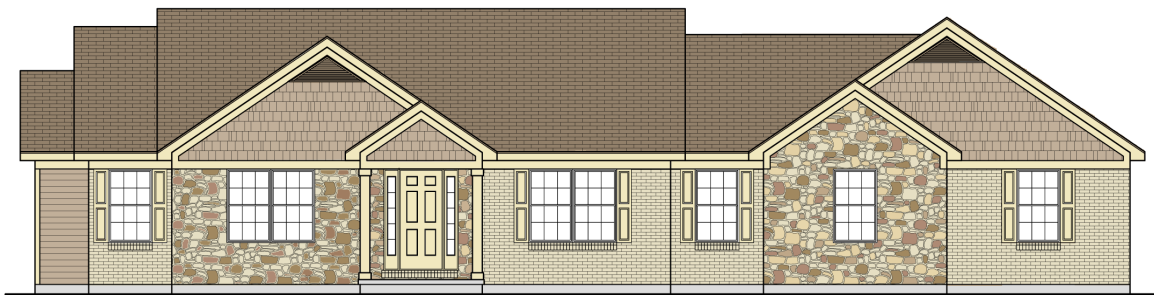
CLASSIC  
series

the WILSPRING Ranch

ELEVATION OPTIONS



Front Elevation A



Front Elevation B



Front Elevation C



Front Elevation D

**Greystone**  
building quality homes for your lifestyle

[www.greystonecountryhomes.com](http://www.greystonecountryhomes.com)

THIS BROCHURE IS FOR ILLUSTRATIVE USE ONLY. ALL FLOOR PLANS, EXTERIOR RENDERINGS AND DIMENSIONS ARE APPROXIMATE, NOT DRAWN TO SCALE AND ARE SUBJECT TO CHANGE. FLOOR PLANS, EXTERIOR AND STANDARD FEATURE MAY VARY PER COMMUNITY AND PER ELEVATION AND OPTIONS SELECTED. ALL SQUARE FOOTAGES FIGURED ON OUTSIDE DIMENSIONS, OPEN FOYERS INCLUDED. PLEASE SEE YOUR SALES PROFESSIONAL FOR SPECIFIC DETAILS. GREYSTONE COUNTRY HOMES RESERVES THE RIGHT TO MODIFY ALL PLANS AND SPECIFICATIONS WITHOUT NOTICE OR OBLIGATION.

